

## YOUR ADVANTAGES

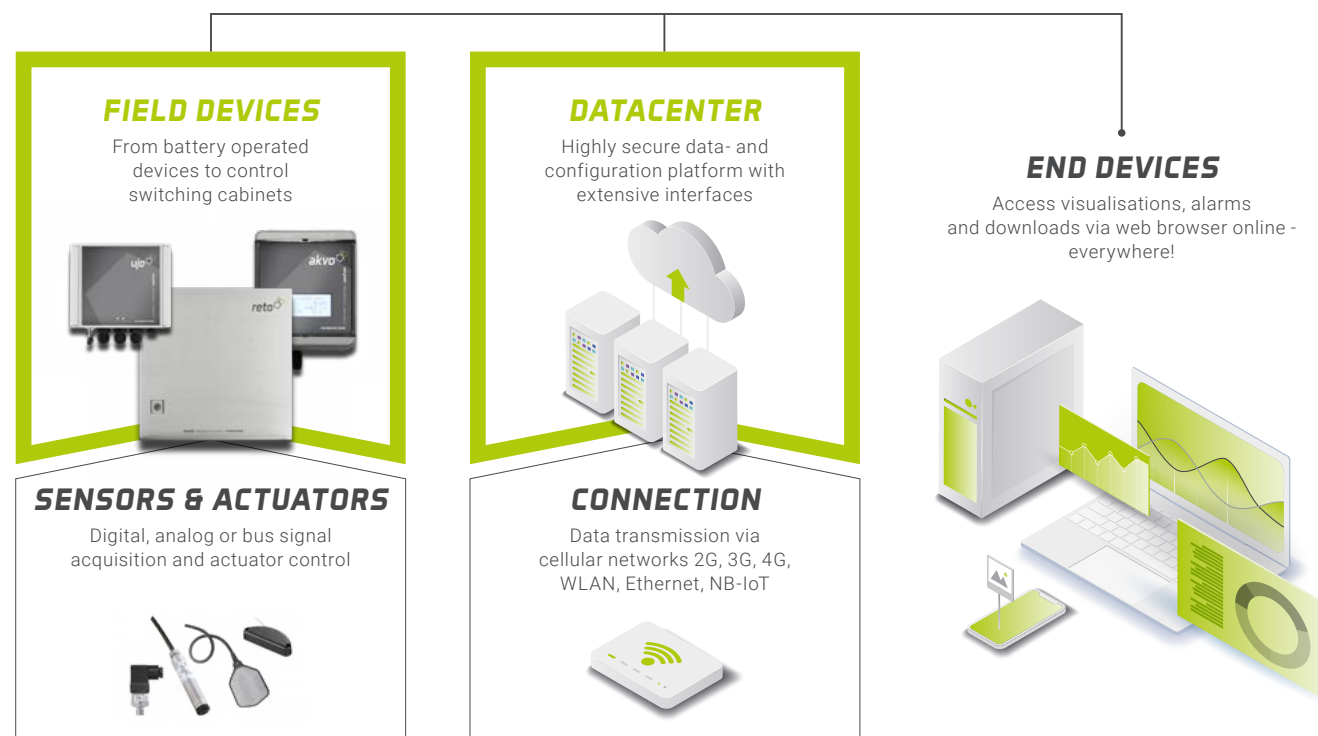
- The unifying platform for all types of devices
- User-friendly and highly functional
- Unbeatable security concept by design
- Maximum reliability in the platform-as-a-service operating variant
- Highly scalable - operate 1 station or 10,000 with limitless performance

## UNIQUE SELLING POINTS

- Station connection of field devices via cellular networks, LAN, WLAN or LPWAN
- Station management and health monitoring
- Process data storage
- Process and history data visualisation
- Business logics and evaluations
- Alarm gateway
- Data export interfaces to third party systems

## THE FUNCTIONAL PRINCIPLE

As the most important interface between you and your remote stations, the cell.datacenter is the linchpin of our system solution.



## DID YOU ALREADY KNOW?

Security doesn't just start with the encryption of user data, but also the planning of the system architecture. Our datacenter is TÜV-certified and relies on

security-by-design. The security concept extends from the devices in the field to the data query on your tablet.

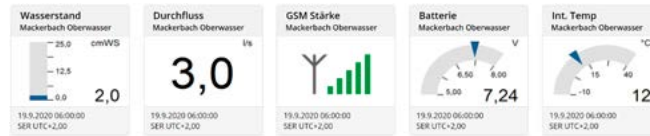
# cell.DATACENTER

## ONLINE SUPERVISORY CONTROL AND DATA ACQUISITION SYSTEM

As the most important interface between you and your remote stations, the cell.datacenter is the linchpin of our system solution.

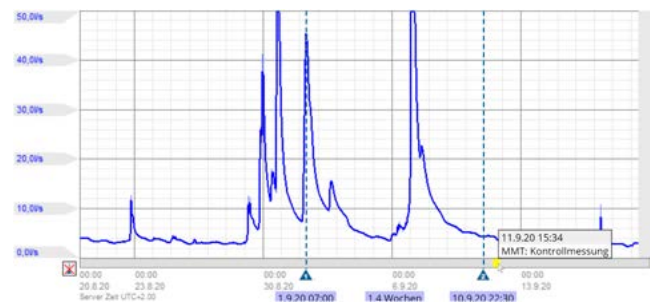


## THE MAIN COMPONENTS



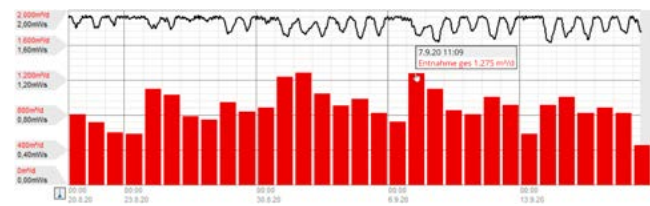
### Actual values

- The items show the latest process data and therefore the current system status and are available in a variety of formats.



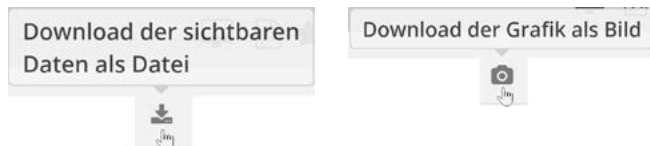
### Line charts

- Your history data is visualised with highly dynamic handling options.
- Tools such as pan, zoom, jump or the section bars ensure efficient navigation through your recorded datasets.
- Integrated data analyses quickly provide a statistical overview of the displayed data.
- Leave comments directly in the diagram for traceable documentation of measures taken.



### Bar charts

- Like the line chart, they visualise historical datasets and clearly display water quantities or operating hours.
- Of course, line and bar charts can be combined in one diagram.



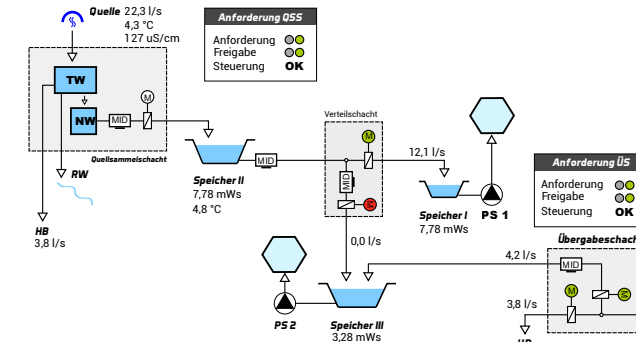
### Integrated data export

- Creates an image file from a diagram for documentation or outputs data in a standard Excel format for further processing.

| UTC+2,00       | HOCHBEHÄLTER 1<br>Zulauf Quelle A [m³] | HOCHBEHÄLTER 1<br>Zulauf Quelle B [m³] | HOCHBEHÄLTER 1<br>Entnahme [m³] |
|----------------|--|--|---------------------------------|
| 2020-09-14, Mo | 0,00                                   | 3.119,00                               | 2.172,00                        |
| 2020-09-15, Di | 0,00                                   | 4.129,00                               | 2.184,00                        |
| 2020-09-16, Mi | 0,00                                   | 4.142,00                               | 2.183,00                        |
| 2020-09-17, Do | 0,00                                   | 4.141,00                               | 2.120,00                        |
| 2020-09-18, Fr | 0,00                                   | 4.137,00                               | 2.152,00                        |
| 2020-09-19, Sa | 0,00                                   | 1.679,00                               | 728,00                          |
| Gesamt         | 0,00                                   | 21.347,00                              | 11.539,00                       |

### Evaluation tables

- Used for reporting and summarising data. The dynamic selection of time periods and intervals make the analysis tables a very valuable tool.



### Schematic with actual values

- Interactive schematics provide you with a maximum overview of the current process data and the technical plant.
- Control elements can be used to send control commands.
- Dynamic graphics show tank levels and well water levels.
- By clicking on the respective graphic, the system navigates you to further reportings.



### Map

- The map view provides a compact overview of a large number of stations. It shows the status of the stations as well as a summary of the latest measured values.



### Comments and operations diary

- Possibility of documenting maintenance and carried out measures in reportings and charts.
- Important information is no longer lost.



### Integrated document storage

- Save circuit diagrams, certificates, operating instructions and photos in the integrated document storage system.



### Automatic PDF reporting

- Automatically receive reports in pdf format by e-mail at a selectable interval